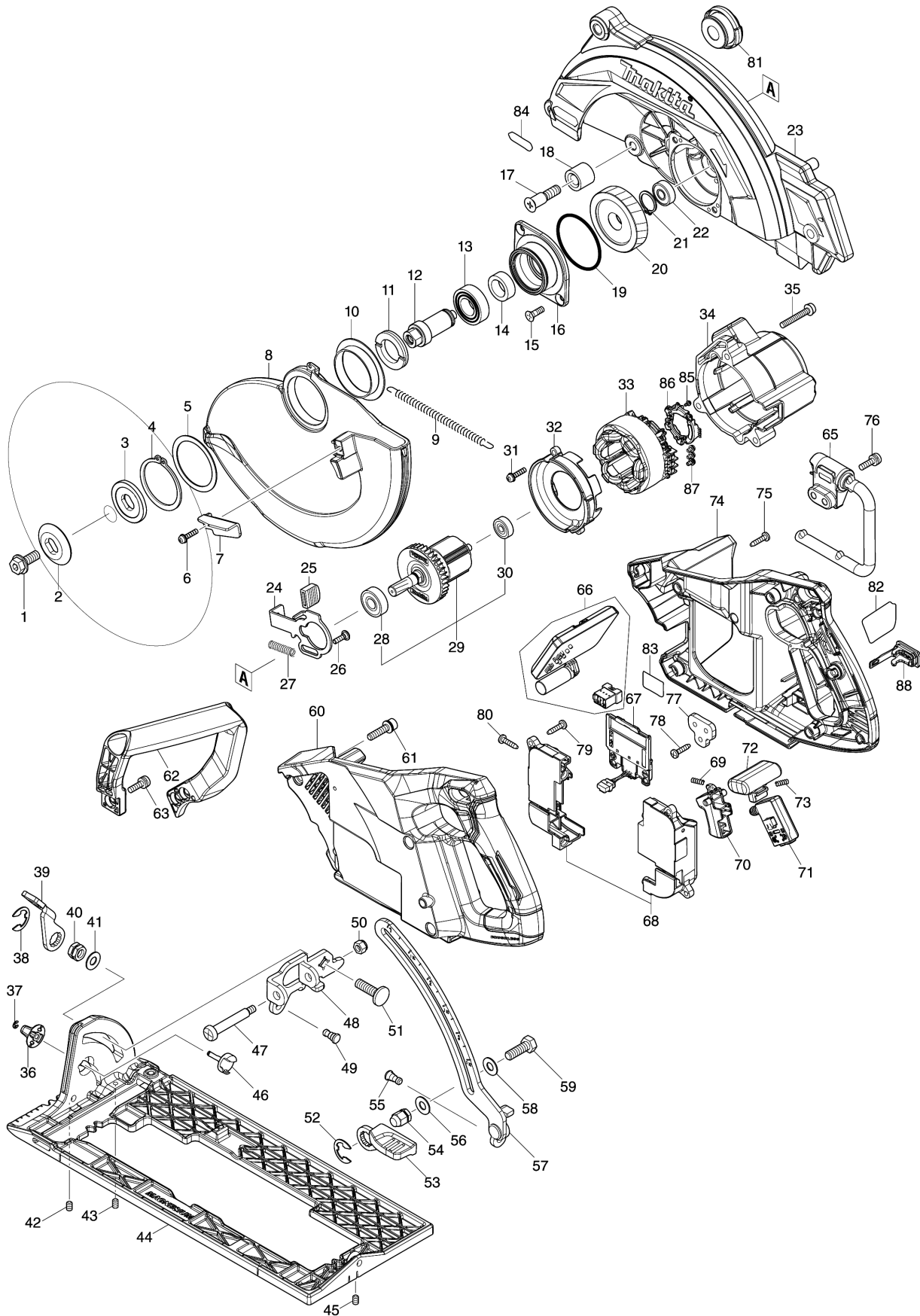


Model No.RS002G 260MM CORDLESS REAR HANDLE SAW



Model No.RS002G 260MM CORDLESS REAR HANDLE SAW

Item	Parts No.	Description	I/C	Qty	New/Old	Opt. 1	Opt. 2	Note
001	266400-6	HEX. SOCKET HEX. BOLT M8X20		1				
002	224613-5	OUTER FLANGE 40		1				
003	224360-8	INNER FLANGE 40		1				
004	961202-2	RETAINING RING S-45		1				
005	267219-6	FLAT WASHER 45		1				
006	911531-3	P.H.SCREW M4X18 WITH WRM		1				
007	271467-1	LEVER 40		1				
008	312A93-4	SAFETY COVER		1				
009	232675-9	TENSION SPRING 7		1				
010	413356-6	SPACER		1				
011	285809-3	BEARING RETAINER 23-36		1				
012	326941-5	SPINDLE		1				
013	211251-2	BALL BEARING 6003LLB		1				
014	257024-9	RING 17		1				
015	265034-2	+ COUNTERSUNK HEAD SCREW M5X16		2				
016	312A94-2	BEARING BOX		1				
017	265B77-6	+COUNTERSUNK HEAD SCREW M8X35		1				
018	262200-2	RUBBER SLEEVE 10		1				
019	213676-6	O RING 53		1				
020	227873-8	HELICAL GEAR 57		1				
021	961057-5	RETAINING RING S-17		1				
022	210029-0	BALL BEARING 608ZZ		1				
023	140Y58-8	BLADE CASE COMPLETE		1				
C10	213434-0	O RING 26		1				
024	347168-4	SHAFT LOCK		1				
025	286039-9	CAP		1				
026	251529-1	+ PAN HEAD SCREW M4X14		1				
027	232381-6	COMPRESSION SPRING 6		1				
028	210059-1	BALL BEARING 6000DDW		1				
029	519667-8	ROTOR ASSY		1				
D10		INC. 28,30						
030	210022-4	BALL BEARING 626DDW		1				
031	911531-3	P.H.SCREW M4X18 WITH WRM		2				
032	413359-0	BAFFLE PLATE		1				
033	629A40-1	STATOR		1				
034	140Y63-5	MOTOR HOUSING COMPLETE		1				
C10	263002-9	RUBBER PIN 4		1				
035	911258-5	PAN HEAD SCREW M5X35		3				
036	457963-5	DIAL 22		1				
037	961017-7	STOP RING E-3		1				
038	257953-6	BOW STOP RING E-12		1				

Please order the parts with part number.

Print Date 19/2/2021

Model No.RS002G 260MM CORDLESS REAR HANDLE SAW

Item	Parts No.	Description	I/C	Qty	New/Old	Opt. 1	Opt. 2	Note
039	271468-9	LEVER 56		1				
040	264006-4	HEX. NUT M8-13		1				
041	941201-0	FLAT WASHER 8		1				
042	266229-0	H.S.SET SCREW(CUP POINT)M5X8		1				
043	266229-0	H.S.SET SCREW(CUP POINT)M5X8		1				
044	312A92-6	BASE		1				
045	266229-0	H.S.SET SCREW(CUP POINT)M5X8		1				
046	327760-2	STOPPER PIN		1				
047	251221-9	+ PAN HEAD SCREW M6		1				
048	347169-2	ANGULAR GUIDE		1				
049	256511-5	SHOULDER PIN 6-7		1				
050	252014-7	HEX. LOCK NUT M6-10		1				
051	266227-4	CAP SQUARE NECK BOLT M8X28		1				
052	257953-6	BOW STOP RING E-12		1				
053	271433-8	LEVER 59		1				
054	252240-8	HEX. CAP NUT M8-13		1				
055	256511-5	SHOULDER PIN 6-7		1				
056	941201-0	FLAT WASHER 8		1				
057	162958-2	DEPTH GUIDE		1				
058	941201-0	FLAT WASHER 8		1				
059	251538-0	HEX. BOLT M8X24		1				
060	183S81-4	HANDLE SET		1				
C10	263005-3	RUBBER PIN 6		1				
D10		INC. 74						
061	922343-9	H.S.H.BOLT M6X25 WITH WR		4				
062	413355-8	GRIP		1				
063	911228-4	PAN HEAD SCREW M5X18		3				
065	127771-5	HOOK ASSEMBLY		1				
066	620E67-8	CONTROLLER		1				
067	632P65-6	TERMINAL UNIT		1				
068	183S18-1	TERMINAL BOX SET		1				
C10	263005-3	RUBBER PIN 6		2				
069	231433-0	COMPRESSION SPRING 4		1				
070	457432-6	SWITCH LEVER		1				
071	651083-9	SWITCH C3XA-1PSPM		1				
072	457431-8	LOCK OFF BUTTON		1				
073	231433-0	COMPRESSION SPRING 4		1				
074	183S81-4	HANDLE SET		1				
C10	263005-3	RUBBER PIN 6		1				
D10		INC. 60						

Model No.RS002G 260MM CORDLESS REAR HANDLE SAW

Item	Parts No.	Description	I/C	Qty	New/Old	Opt. 1	Opt. 2	Note
075	266326-2	TAPPING SCREW 4X18		8				
076	911228-4	PAN HEAD SCREW M5X18		2				
077	347805-0	LOCK PLATE		1				
078	266326-2	TAPPING SCREW 4X18		1				
079	266326-2	TAPPING SCREW 4X18		4				
080	266326-2	TAPPING SCREW 4X18		2				
081	286045-4	CAP 40		1				
082	858E57-3	RS002GNAME PLATE		1				
083	858E64-6	RS002GSERIAL NO. LABEL		1				
084	8012U4-2	XGT LOGO LABEL		1				
085	652093-9	PAN HEAD SCREW M2X5		3				
086	632R96-7	SENSOR UNIT		1				
087	652069-6	FLAT HEAD SCREW M3X6		3				
088	140G30-2	CAP COMPLETE		1				
C10	213218-6	O RING 16		1				
C20	818H48-4	CAP LABEL		1				
A01	E-07696	EFFICUT FOR WOOD CUTTING/ EN		1				
A02	782016-4	OFFSET WRENCH 13		1				
A03	140Y64-3	GRIP37 COMPLETE		1				

Please order the parts with part number.

Print Date 19/2/2021